



# WALL PRINTER



PAGE 2	· CATALOGUE
PAGE 3	· THE IDEA AND STORY BEHIND WALL PRINTER
PAGE 4	· WALL PRINTING AND DESIGN
PAGE 5	· THE ADVANTAGES OF WALLPRINTING
PAGE 6	· PAINT QUALITY OF THE MACHINE
PAGE 7	· WHAT MATERIAL CAN BE PRINTED ON
PAGE 8	· SUSTAINABLE DEVELOPMENT
PAGE 11	· THE NEW PRINT HEAD
PAGE 12	· PRINT ANGLE HEIGHT ADJUSTABLE
PAGE 13	· MULTI-ANGLE PART DETAILS
PAGE 14	· WALL PRINT EFFECT
PAGE 15	· MACHINE PROCESSOR AND HARDWARE
PAGE 16	· MOBILE AND TRANSMISSION UNIT
PAGE 17	· STABLE SOFTWARE
PAGE 18	· PIGMENTS USED
PAGE 20	· WALL PRINTER FOR YOU
PAGE 22	· PRINT EFFECT
PAGE 24	· TECHNICAL SPECIFICATIONS

wall printer

# TANYU

## THE NEW WALL PRINTER:

Made by the progress of machines  
and the innovation of design

THE IDEA AND STORY BEHIND WALL PRINTER



WALL PRINTER



# TANYU

TIPS

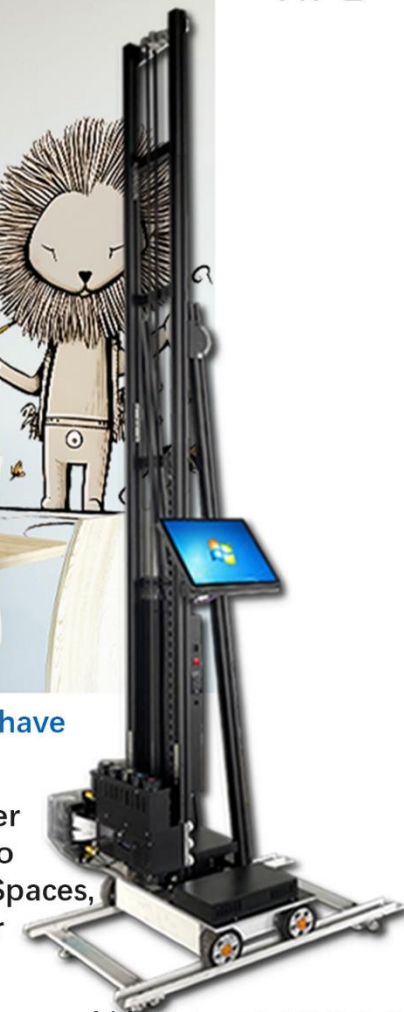


The TPP1000 has two mobile printing methods, tire drive and track drive, and the two driving methods have their own characteristics

The rail drive version comes with a six-meter rail, which can extend the print area indefinitely depending on the increase of the rail, and is suitable for almost any scenario.

The tire drive version is equipped with a 3-meter long guide rail, with free walk and guide rail two ways, free walk is suitable for printing in small Spaces, and can not print too long patterns, suitable for indoor printing

You can choose the version you want at the time of purchase



WALL PRINTER

# TANYU

## Advanced Wall Printing for Wall Design Made in China

Wall printing is a technical process that allows you to print any pattern you want realistically affixed to a wall. The Wall printer can print on almost any surface - regardless of material and unevenness. And work quickly, cleanly and quietly.



# TANYU



## THE ADVANTAGES OF WALL PRINTING

### ECO-FRIENDLY PIGMENT

- Quick-drying ink - Made in China
- non-combustible
- More environmentally friendly, no smell.

### EXCELLENT MACHINE

- This device is suitable for all surfaces
- Indoor printing lasts 10 years, outdoor printing lasts 5 years
- Print directly on the wall - no drilling or screws required
- Printing on the ground will not cause people to slip or fall
- The machine can be flexibly adapted to the room size and height

### QUALITY ASSURANCE

- Brilliant colors
- The print screen is scratch-resistant
- Light resistant (long time storage)
- Water and solvent resistant
- Easy to clean

### A MYRIAD OF POSSIBILITIES

- Use your imagination for unlimited design
- Endless possibilities for color
- Maximum printing height 3,5 meters, unlimited width
- Printable on almost any surface \*
- Can be combined with other design techniques

WALL PRINTER



# TANYU



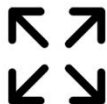
Print up to 16 square  
meters per hour



Variable size of the  
ink droplets



CMYK chromatography with  
true color wall printing



The printing area can  
reach 3.5 meters high



## PRINT QUALITY OF THE MACHINE



Supports the exchange of  
DX10 and DX7 printheads

## DPI

DX10 printhead supports 2080dpi  
DX7 printhead supports 2880dpi

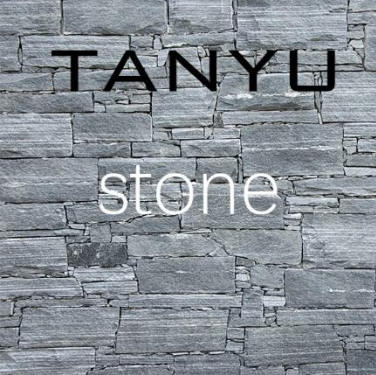


The wall print width is  
unlimited



The ink is quickly dried by  
UV LED technology

## WALL PRINTER

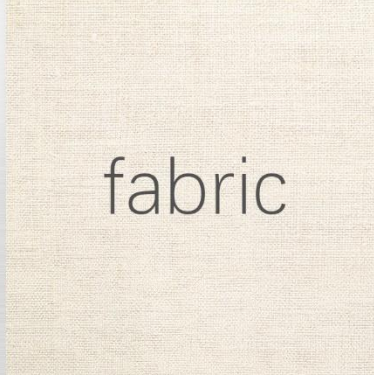


TANYU

stone



metal



fabric



wood



brick wall



glass

# The Wall printer Can print on almost any surface

**Wall printer offers you endless possibilities**

**Innovative technology and structure make it possible for you to print on a flat surface**

**On any vertical surface - reduces material requirements and virtually unlimited print space**

If necessary, the corresponding printing substrate must be pretreated. Each material is tested prior to printing.



plaster



Acrylic



concrete



plastics



veneer



wallpaper

WALL PRINTER



# TANYU



GREENEST



RECYCLABLE



POLLUTION-FREE



TRANSPORTABLE

## SUSTAINABLE DEVELOPMENT

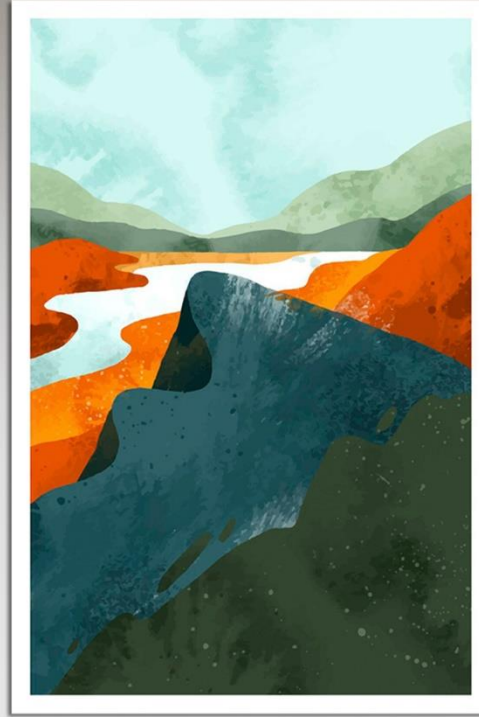
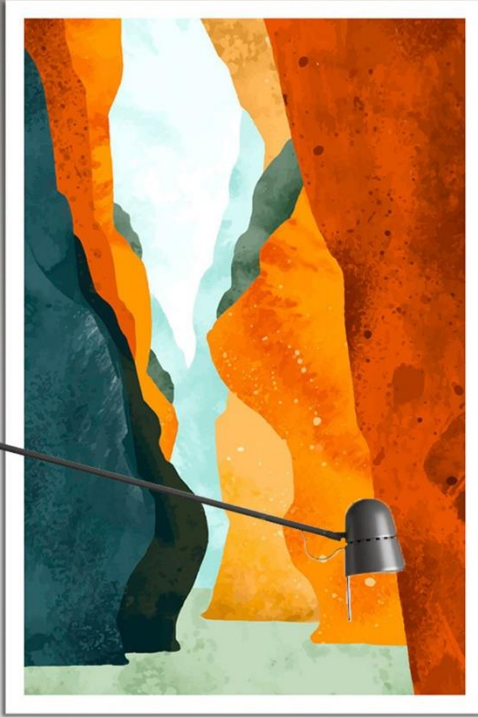
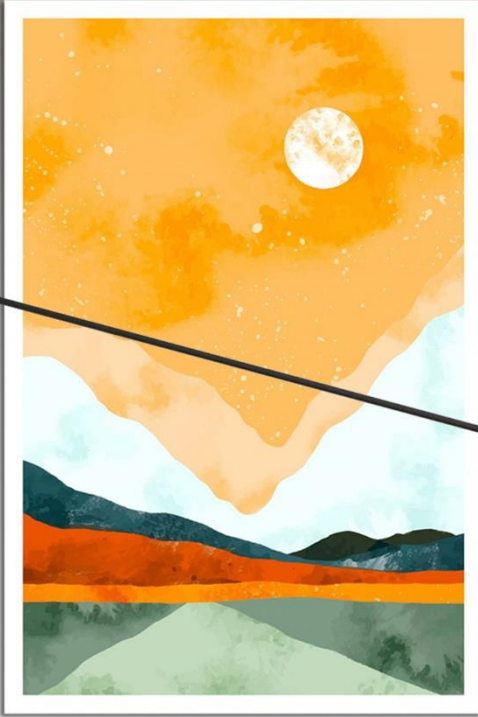
# innovation Convenient environmental protection

It is important for us to know all of our suppliers so that we can ensure that our parts are completely transparent and open and as independent of the world market as possible. Most parts of Wall printer are from suppliers in China, which enables us to deliver and replace parts for you as soon as possible.

The Wall printer stands for high-tech and environmental protection. We also see ourselves as a role model for other companies. We adhere to the goal of innovation and environmental protection to our employees and our suppliers. It's not just good for nature. After all, imagine how surprised you will be when you see that after a successful print job, there are no piles of scrap around with mountains of film made of PVC.

## WALL PRINTER

TANYU



WALL PRINTER



TANYU

# WALL PRINTER

THE NEW WALL PRINTER LETS YOU CREATE AT WILL  
ON A FLAT SURFACE

CREATE



WALL PRINTER





# TANYU

## THE NEW PRINT HEAD

# Wall printer's innovation The New print head

At the heart of the Wall printer is the new print head unit. It acts as a central control unit and is located directly in the housing of the printing machine. Allow you to quickly replace the print head, improve your work efficiency, reduce the difficulty of electronic equipment maintenance.

In order to ensure that the image is fully printed, each print head needs to receive electronic pulse control. At the Wall printer, these electronic pulses can be programmed to ensure that every drop of ink forms the perfect effect, resulting in the desired print result.

On the Wall printer, up to three printheads can work simultaneously, and the printhead is protected by a shield to prevent ink from flowing into the housing. This guarantees long durability and the best print quality.

Low quality inkjet printers often experience problems such as dry nozzles or blurred print images, which leads to considerable cost loss. On the Wall printer, we will test several times to ensure the perfect match between the printhead and all other components.



## WALL PRINTER

# TANYU

## As your machine, Wall printer is ready to provide you with business solutions

The Wall printer has excellent drive shaft and support rod. In some special printers, the support structure can be placed flat on the machine, which is easy for you to store and transport. The machine can be adapted to different room heights. The shape and position of the cross supports are fixed so that there is no need to disassemble the machine.

The longitudinal axis can be extended from a minimum of 1.5 meters to a maximum of 3.5 meters. For printed images more than 1.5 meters high, the existing pillar can be extended by using bolts or fasteners to link other pillars to ensure stability even at different heights.



PRINT ANGLE, HEIGHT ADJUSTABLE

WALL PRINTER

# TANYU

## Advanced Design, Precision, Simple of Wall printer

For the design of the Wall printer, we focused on ease of operation and industrial quality. Moreover, the appearance of the Wall printer is also very outstanding, thanks to the designer's use of black, silver, brown and blue colors in the appearance of the product.

The power connection is located directly on the platform, ensuring that it does not get tangled during the printing process. Internal power supply and data connections are provided by dedicated cables. The maximum height of the cable wire designed for the printer is 3.5 meters.

The combination of various materials makes the design style of the Wall printer very uniform, and also ensures the best ventilation of the various hardware components.



WALL PRINTER



你好  
 Hello  
 Bonjour  
 こんにちは  
 안녕하세요  
 Cześć  
 Bom dia  
 Здравствуйте  
 Buenos días  
 Merhaba  
 Salut  
 안녕하세요  
 Hej  
 Oi  
 Привет  
 Hola  
 Selam

The country fonts on the blue Wall are printed by the Wall printer.



WALL PRINTER

TANYU



MACHINE PROCESSOR AND HARDWARE

Precise, safe, stable and  
durable electronic components

WALL PRINTER



The logo for TANYU, featuring the word "TANYU" in a bold, white, sans-serif font on a black background.

## MOBILE AND TRANSMISSION UNIT

Wall Printer has a steady machine running state and an accurate print head running track at work

With the new Wall printer, you can print on almost any surface. With the latest drive shaft and motion wheel, wall printers can easily work on walls with holes and cracks. A built-in laser sensor system compensates for wall nonuniformity.

This means that even uneven walls can be printed with the Wall printer. The laser measures the maximum and minimum distance to the wall. Using this information, Wall printer can optimally adjust the printing process to suit complex printing scenarios, ensuring that you can print well on uneven walls.



WALL PRINTER



# The software on Wall printer makes it quick and easy to get started

Wall printer has first-class mechanical hardware as well as intelligent software that can run stably. Our development team is working hard to make Betterprinter run stably on the machine system during the research process.

The effort is worth it: the newly developed Wall printer runs Windows 10 stable and can install Betterprinter or any other professional software.

Some of Wall printer's products have an interface optimized for touch input, allowing them to connect to the network over Wi-Fi for software operations.

The Wall printer comes with a 10.4-inch computer screen for you to use, or you can plug in your own screen or laptop to control the device.

# TANYU

## Innovative eco-friendly pigments allow you to create safely and freely.

The UV inks we use will enhance your experience. As with all components of the Wall printer ecosystem, they are held to very high standards and exacting requirements. The Wall printer uses EPSON brand UV ink.

EPSON inks are ideal for wall printing because they cure in a very short period of time and are scratch and erosion resistant. The printing can guarantee indoor 10 years and outdoor 5 years. All patterns printed on the Wall using the Wall printer can be repainted at any time. You can print them out at any time and then reprint them over and over again.

The UV ink used by the Wall printer is suitable for almost any scene. Because it is sterile and resistant to wear and tear, the walls of children's rooms, doctors' offices, and museums can also be printed without concern.

### PIGMENTS USED



### WALL PRINTER

TANYYU



WALL PRINTER



# TANYU

## Choosing the Wall printer brings you a variety of conveniences.

### Equipment

As the inventor of the Wall printer, we print about 500 square meters of wall surface per year. Wall printer is the result of our many years of experience in a wide variety of wall printing projects

### Market support

We provide you with images, videos and text to help you get customers. We also produce promotional materials such as brochures or flyers upon your request. Currently, we offer market support in both Chinese and English.

### Easy to use

You can start using the device as soon as you get it. Because we don't have a complicated equipment list. We wanted to keep the machine simple and easy to use

### No ongoing cost

You do not need to pay extra for the machine, because the Wall printer is easy to update and repair, you can also maintain the equipment yourself, we do not charge you subscription or franchise fees.

### Technical support

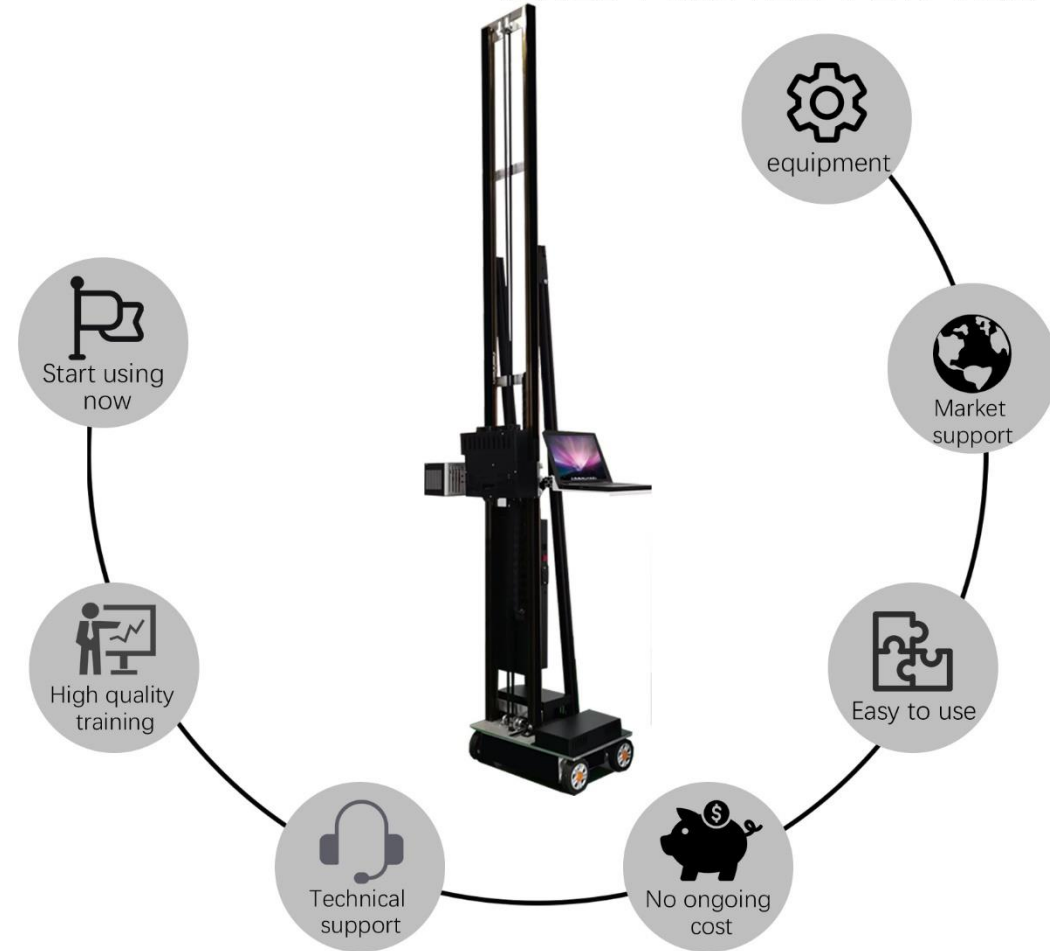
Our customer service team is made up of highly trained technicians who are knowledgeable about the Wall printer and can help you with technical issues.

### High quality training

For every Wall printer you can get training from us. Here you will learn the details about the device. We will show you what the best terrain is, how to prepare graphics and how to maintain the equipment yourself.

The Wall printer is ready for you and you can start your printing project right away.

## WALL PRINTER FOR YOU



## WALL PRINTER



WALL PRINTER



TANYU



PRINT EFFECT

# Giant animal silhouettes are printed on office walls

Wall printer provides a wide variety of excellent printing results for your company , printing fast, environmentally friendly and safe.



WALL PRINTER



WALL PRINTER



Model	TPP1000	Ink Bag Capacit)	250ml per clolor
Printing Technology	Piezoelectric DOD (Ink on Demand) inkjet technology	Noise emission	Approx. 40 dB(A)
Ink Type	UV eco-friendly ink		
Printhead Manufacturer	EPSON	Ambient temp	-10°C -60°C
Print Head Type	DX10/DX7	Relative Humidity	"10%-80% relative humidity, non-condensingstate."
Dropsizes	7PL	Amount of print heads	2/3 Optional
Image Width	Unlimited	Color	Cyan, Magenta, Yellow, Black, White
Image Heigth	Standard 3m, can be extended to 3.5m	Horizontal Printing Resolution	300, 600 and 720 DPI selectable
Correction of wall unevenness	UP to 3cm	Vertical Printing Resolution	300, 600, 720, 800, 1440, 2080 DPI selectable
Wall Distance Control	Two Laser sensors for automatic wall shape compensation	Printing speed	2~16 sqm/h
Ink Curing System	UV Lamp	Origin	China
		Multi-Pass Printing	1, 2, 4 and 8 Pass-Support
Image Formats	PNG,JPG,PSD,AI,TIFF	structure	All aluminum frame
Image Processing software (RIP)	PhotoShop	Printing technology	VSDT variable ink drop technology, high fault tolerance feathering technology, automatic recovery printing technology"
os	Windows 7		
OS Mainboard	Cortex-ARM 64-bit, Quad-core, 1.5 GHz, 4 GB RAM, 128 GB		
RIP system	BetterPrinter	orientation	Infrared laser localization
		weight	Machine 40kg, guide rail 40kg
Power Requirements	100-240V AC, 50-60 Hz		
Power Consumption	Max.250W, 20W Standby		
Operator Control	Computer control		
Operator Control Language	English		
Printdirection	Bidirectional		
Printhead Temperature Control	Optional		
Print head voltage	Fully Digital Controlled		
Ink Drop Control	RIP System		

WALL PRINTER

4.5M

Q.C.  
PASSED

WALL PRINTER

TANYU