



WALL PRINTER

TWP1000



PAGE 2 · CATALOGUE

PAGE 3 · INTRO

PAGE 4 · EVOLUTION

PAGE 5 · POLYMORPHIC

PAGE 6 · RAIL-MOUNTED

PAGE 7 · WHEEL TYPE

PAGE 8 · MATERIAL

PAGE 9 · PRINT HEAD

PAGE 10 · LONGITUDINAL AXIS

PAGE 11 · PROCESSOR

PAGE 12 · SOFTWARE

PAGE 13 · PIGMENT

PAGE 14 · PRINT EFFECT

PAGE 16 · TWP1000 FOR YOU

PAGE 18 · ARGUMENT

WALL PRINTER

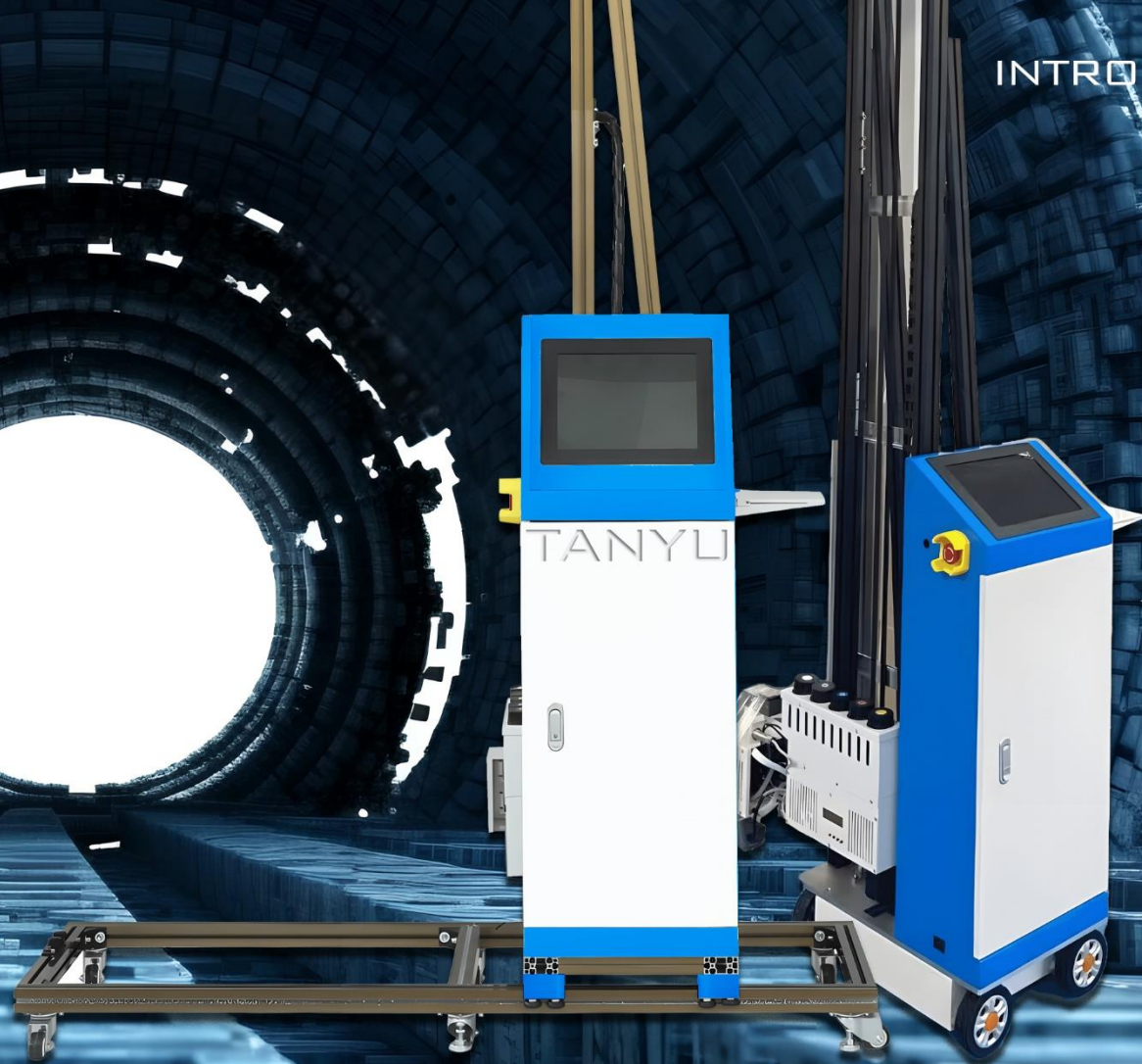
TWP1000

INTRO

ABOUT THE GOOD IDEAS IN
THE PROCESS OF DEVELOPING
THE BASIC WALL PRINTER

TWP1000

As the basic wall printer of our company, the TWP1000 has two color schemes, white and blue, and also has two kinds of track oriented drive and wheel drive in terms of action mode





When there is no wall printer, people paint on the wall by hand, which is not only a waste of time, but also has many disadvantages.

So we started to develop a machine that can automatically print on the wall, and the TWP1000 is the result of our research and development, it can do continuous printing, image color calibration, no color deviation, laser ranging can make the image print exactly where you want



TWP 1000

TWP1000 is our basic product, in the development of the time we gave it two modes of movement, respectively track guide and tire walking, the two modes have their own applicable scenarios.



CHANGE

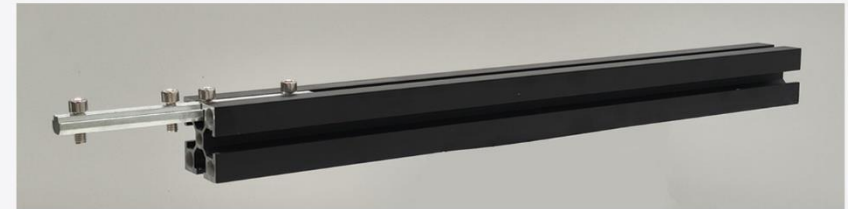


POLYMORPHIC

TWP1000

The track guide form of the TWP1000 is suitable for open space areas, this form can provide unlimited horizontal printing space, the default printing height of the track guide form of the machine is 3 meters (maximum expansion to 3.5 meters), the default printing width of 6 meters, if you need to expand the width, only need to expand the bottom track can be.

The cross section of the track is 4cm×4cm square, the material is aluminum alloy, the internal hollow weight reduction, through the belt driven tire and hollow combined with left and right movement to drive the machine to move, the standard length is 1 meter each



TWP 1000

If you need to print the space is relatively small, then the wheeled TWP1000 can meet your needs, the wheeled compared to the track, occupy less space, more convenient handling,

Wheeled TWP1000 is driven by four tires and click, when you determine the file image to be printed on the computer, the print nozzle starts, the machine walks slowly in the set direction with the increase of the print area, the default print height is 3 meters, can be extended to 3.5 meters, because of the addition of tires, you do not need to install the track can be unlimited print width.



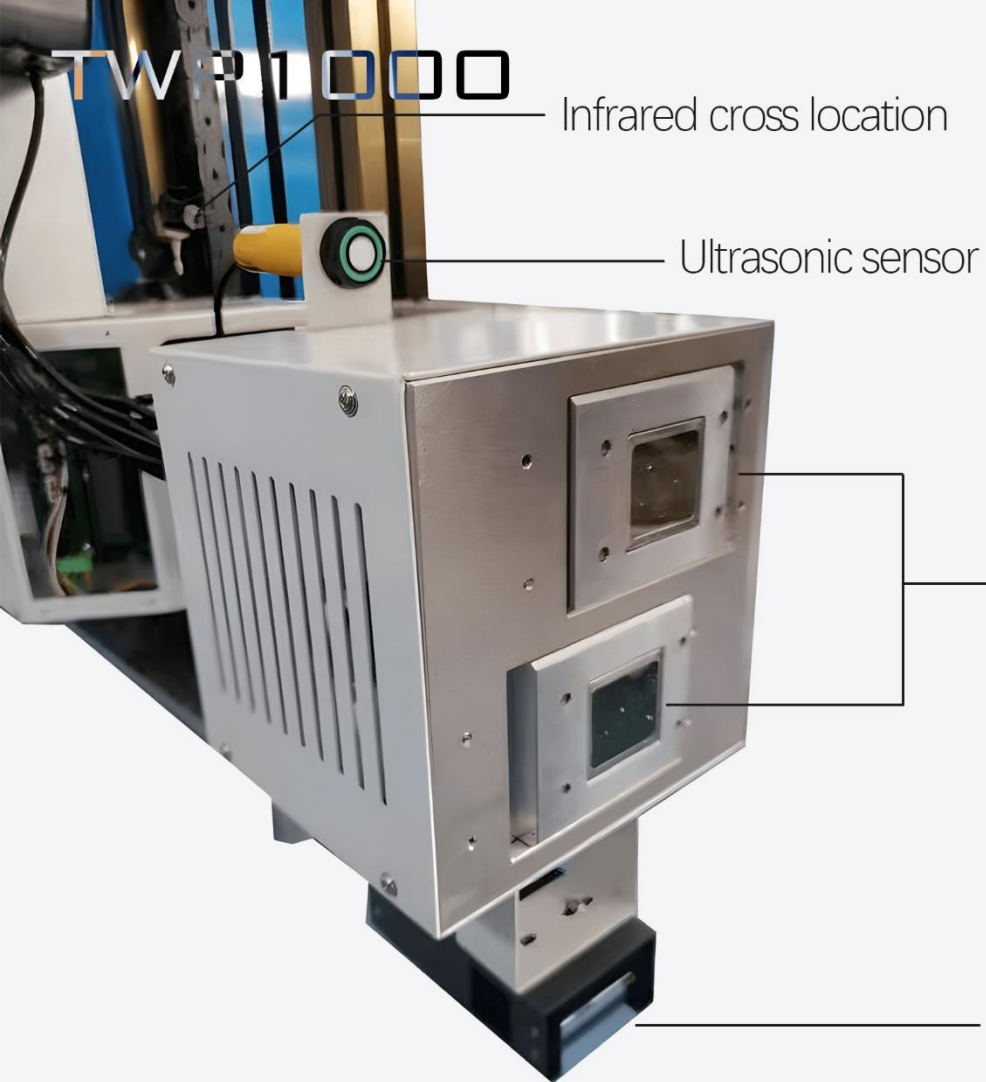


The TWP1000 can be printed on almost any material and wall surface you can think of.

The TWP1000 offers you countless printing possibilities, allowing you to print on virtually any vertical plane, reducing material and site requirements, and giving you unlimited printing space.

If necessary, the corresponding printing substrate must be pretreated. Each material is tested prior to printing.

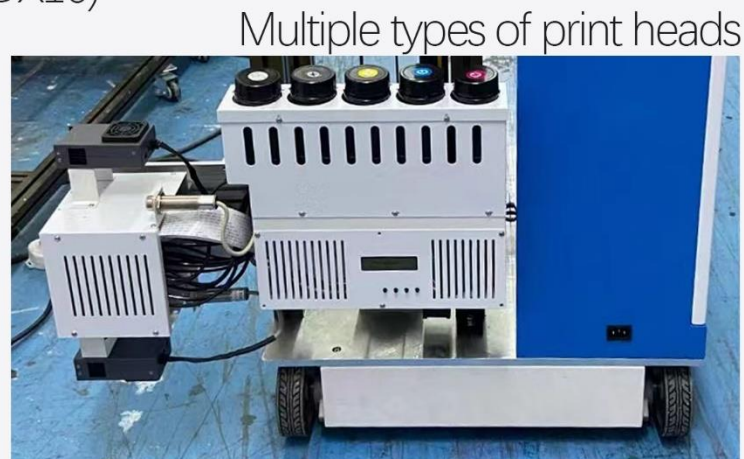




RINT HEAD

At the heart of the Wall printer is the new print head unit. It acts as a central control unit and is located directly in the housing of the printing machine. Allow you to quickly replace the print head, improve your work efficiency, reduce the difficulty of electronic equipment maintenance.

In order to ensure that the image is fully printed, each print head needs to receive electronic pulse control. At the wall printer, these electronic pulses can be programmed to ensure that every drop of ink forms the perfect effect, resulting in the desired print result.



TWP 1000

The base printing vertical axis of the TWP1000 is made of aluminum alloy tubes, which makes the printing process faster and more stable. The vertical axis is divided into three sections (one meter each), which can be folded in half when moving or transporting. These standards make transportation more flexible and adapt to different room heights.

For prints over 3 m high (optional), an extension can be screwed onto the existing cross strut to ensure stability even at this height



TWP 1000

The internal electronic components and circuits of the machine make your use more stable, safe and convenient.

On the TWP1000, we installed a high quality processor. Almost all industrial parts and electronic components come from China, and we are optimized for complex environments in the open air, outdoors, and on construction sites. This makes the TWP1000 reliable, stable and durable.

This ensures that the TWP-1000 can operate in complex and harsh environments, and after the machine is assembled, the workers will check and test the machine to ensure that the machine will not have problems during your use.



TWP1000

SOFTWARE

The software on TWP1000 makes it quick and easy to get started

The TWP1000 has durable mechanical hardware and smooth running software, and our team is working hard to make your use of it even better.

The TWP1000 is equivalent to a computer with Windows 10 installed on it, which can install the software you want in addition to printing the software you need.

The TWP1000 comes with a 10.4-inch computer screen for you to use, or you can plug in your own screen or laptop to control the device.



TWP1000

Innovative eco-friendly pigments allow you to create safely and freely.

EPSON inks are ideal for wall printing because they cure in a very short period of time and are scratch and erosion resistant. The printing can guarantee indoor 10 years and outdoor 5 years. All patterns printed on the Wall using the TWP1000 can be repainted at any time. You can print them out at any time and then reprint them over and over again.



The UV inks used in the TWP1000 are suitable for almost any scene. Because it's sterile and resistant to wear and tear, you can print it in children's rooms, doctors' offices, museums, etc.

PIGMENT



TWP1000

PRINT EFFECT



Print up to 16 square meters per hour



Supports the exchange of DX10 and DX7 printheads



Variable size of the ink droplets



The wall print width is unlimited



The printing area can reach 3.5 meters high



The ink is quickly dried by UV LED technology



CMYK chromatography with true color wall printer



DX10 printhead supports 2080dpi
DX7 printhead supports 2880dpi



TWP1000

Enjoy the convenience of TWP1000

Equipment

As the inventor of the TWP1000, we print about 500 square meters of wall surface per year. Wall printer is the result of our many years of experience in a wide variety of wall printing projects

Market support

We provide you with images, videos and text to help you get customers. We also produce promotional materials such as brochures or flyers upon your request. Currently, we offer market support in both Chinese and English.

Easy to use

You can start using the device as soon as you get it. Because we don't have a complicated equipment list. We wanted to keep the machine simple and easy to use

No ongoing cost

You do not need to pay extra for the machine, because the TWP1000 is easy to update and repair, you can also maintain the equipment yourself, we do not charge you subscription or franchise fees.

Technical support

Our customer service team is made up of highly trained technicians who are knowledgeable about the TWP1000 and can help you with technical issues.

High quality training

For every TWP1000 you can get training from us. Here you will learn the details about the device. We will show you what the best terrain is, how to prepare graphics and how to maintain the equipment yourself.

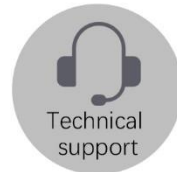
The TWP1000 is ready for you and you can start your printing project right away.



Start using
now



High quality
training



Technical
support



equipment



Market
support



Easy to use



No ongoing
cost

TWP1000 FOR YOU





TWP 1000

ARGUMENT

Model	TWP 1000
Printing Technology	Piezoelectric DOD (Ink on Demand) inkjet technology
Ink Type	UV eco-friendly ink
Printhead Manufacturer	EPSON
Print Head Type	DX10/DX7
Dropsizes	7PL
Image Width	Unlimited
Image Height	The base is 3 meters and can be expanded to 3.5meters
Correction of wall unevenness	UP to 3cm
Wall Distance Control	Two Laser sensors for automatic wall shape compensation
Ink Curing System	UV Lamp
Image Formats	PNG,JPG,PSD,AI,TIFF
Image Processing software	PhotoShop
os	Windows 7
OS Mainboard	Cortex-ARM 64-bit, Quad-core, 1.5 GHz, 4 GB RAM, 128 GB
RIP system	BetterPrinter
Power Requirements	100-240V AC, 50-60 Hz
Power Consumption	Max.250W, 20W Standby
Operator Control	Computer control
Operator Control Language	English
Printdirection	Bidirectional
Printhead Temperature Control	Optional
Print head voltage	Fully Digital Controlled
Ink Drop Control	RIP System

Ink Bag Capacity	250ml per color
Noise emission	Approx. 40 dB(A)
Ambient temp	-10°C -60°C
Relative Humidity	"10%-80% relative humidity, non-condensingstate."
Amount of print heads	2/3 Optional
Color	Cyan, Magenta, Yellow, Black, White
Horizontal Printing Resolution	300, 600 and 720 DPI selectable
Vertical Printing Resolution	300, 600, 720, 800, 1440, 2080 DPI selectable
Printing speed	2~16 sqm/h
Origin	China
Multi-Pass Printing	1, 2, 4 and 8 Pass-Support
structure	All aluminum frame
Printing technology	VSDT variable ink drop technology, high fault tolerance feathering technology, automatic recovery printing technology"
orientation	Infrared laser localization
weight	Machine 65kg, guide rail 40kg
Complimentary computer	industrial computer

